



**THE OHIO STATE
UNIVERSITY**
COLLEGE OF MEDICINE

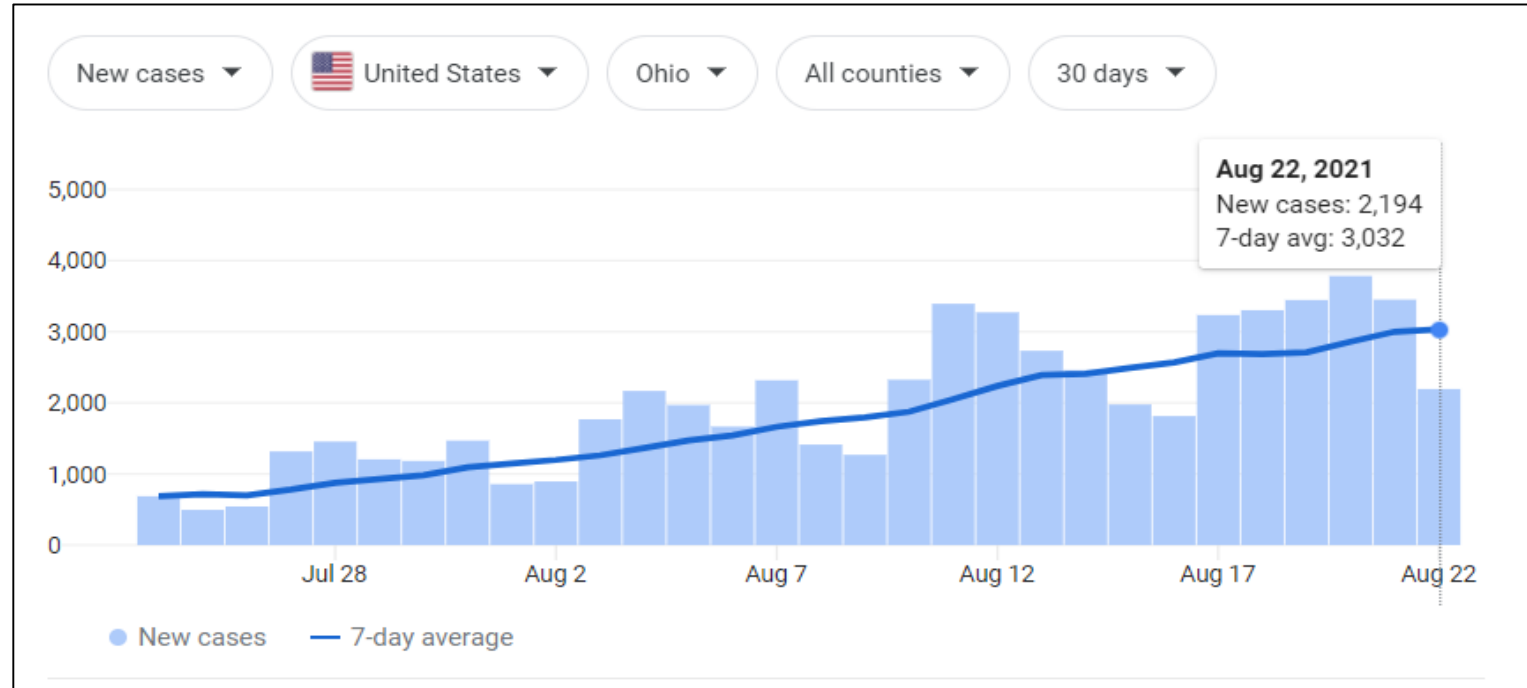
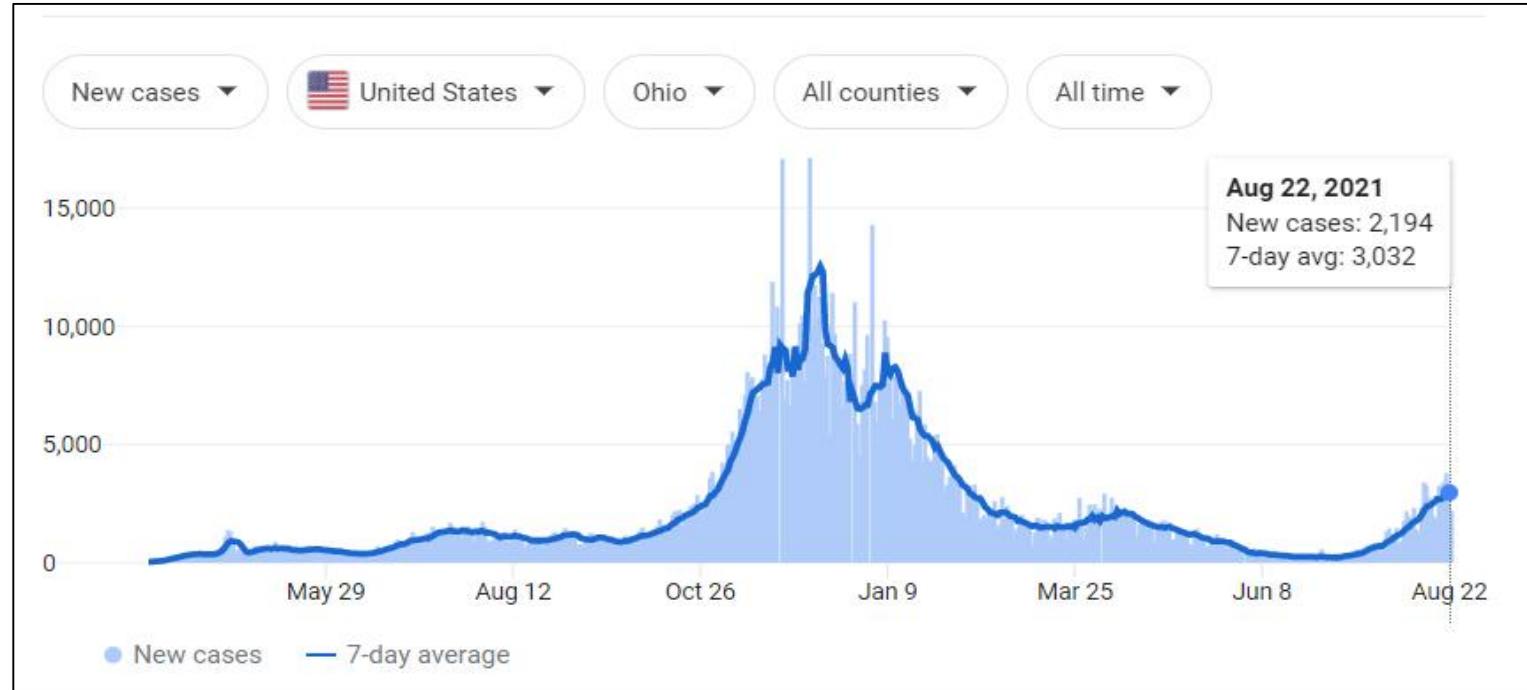
COVID-19 Pandemic

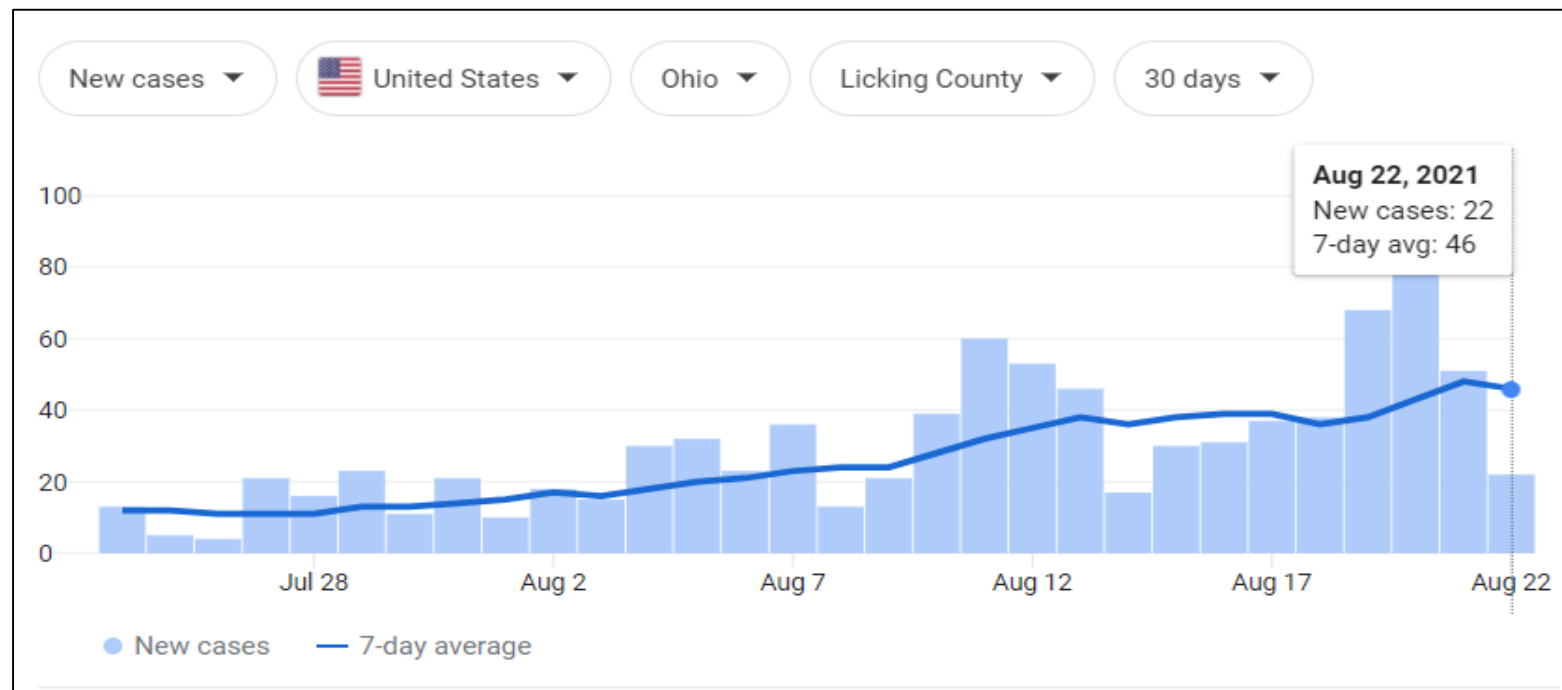
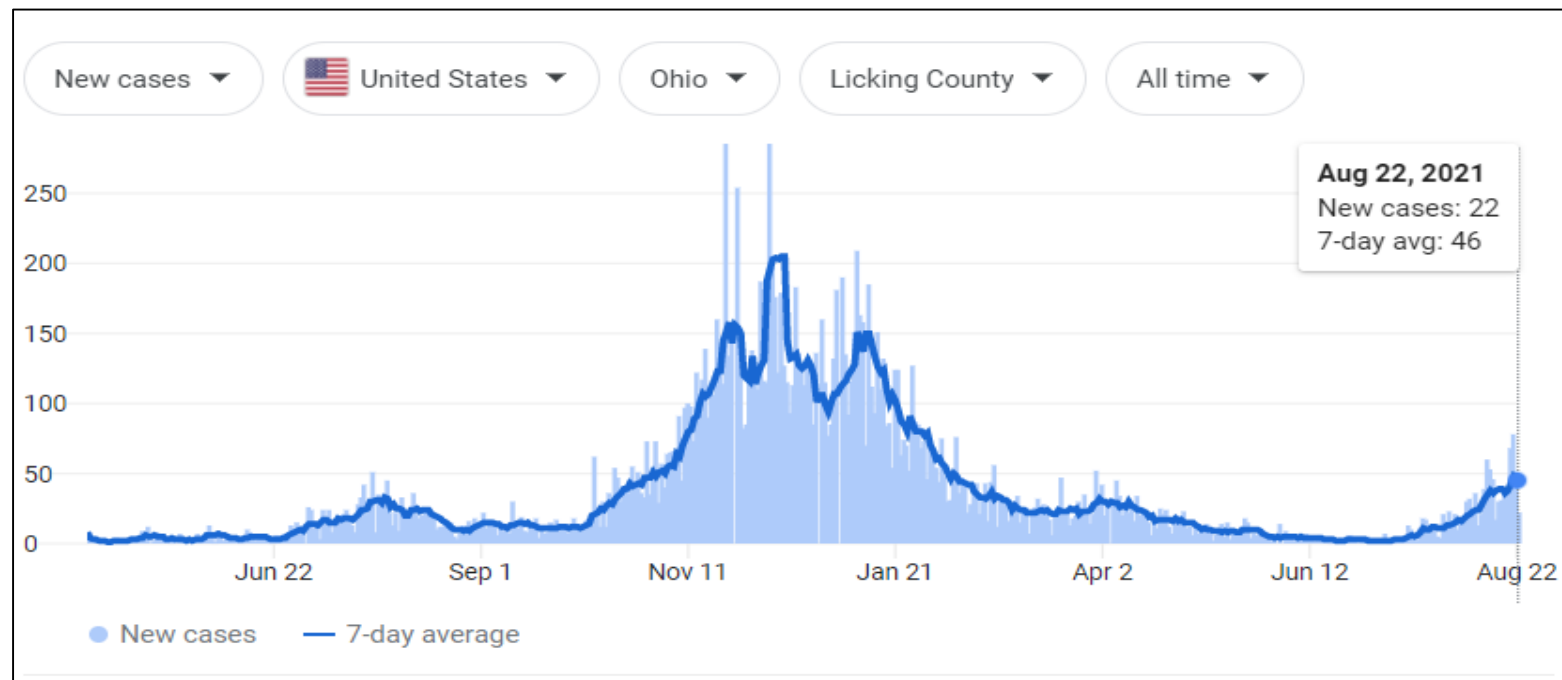
August 23, 2021

Andrew Thomas, MD, MBA
Chief Clinical Officer, OSUWMC
Zone 2 Leader for COVID Response

Agenda

- COVID-19 case numbers
- COVID-19 hospital census
- Genetic variants of the virus
- COVID-19 vaccination program

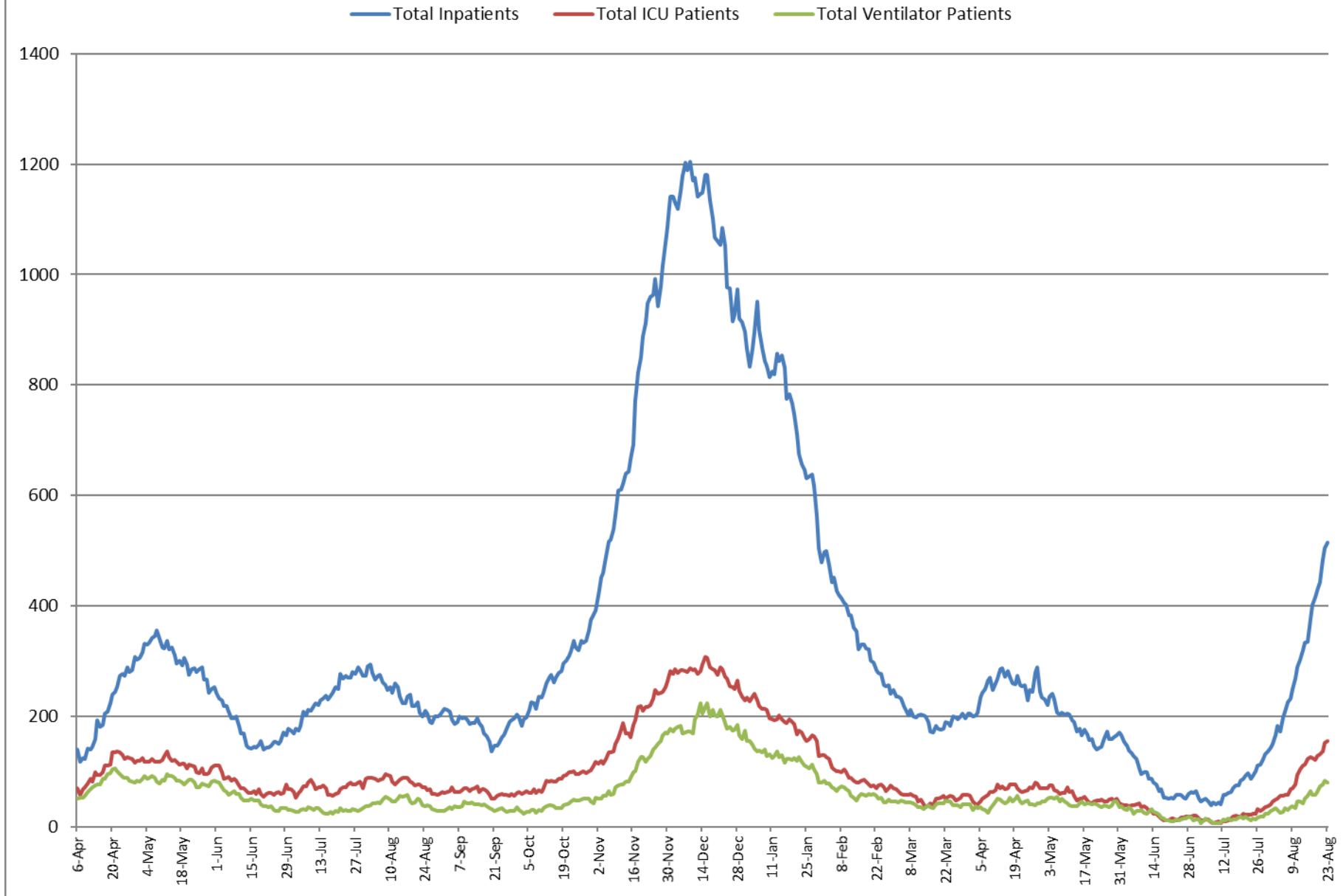




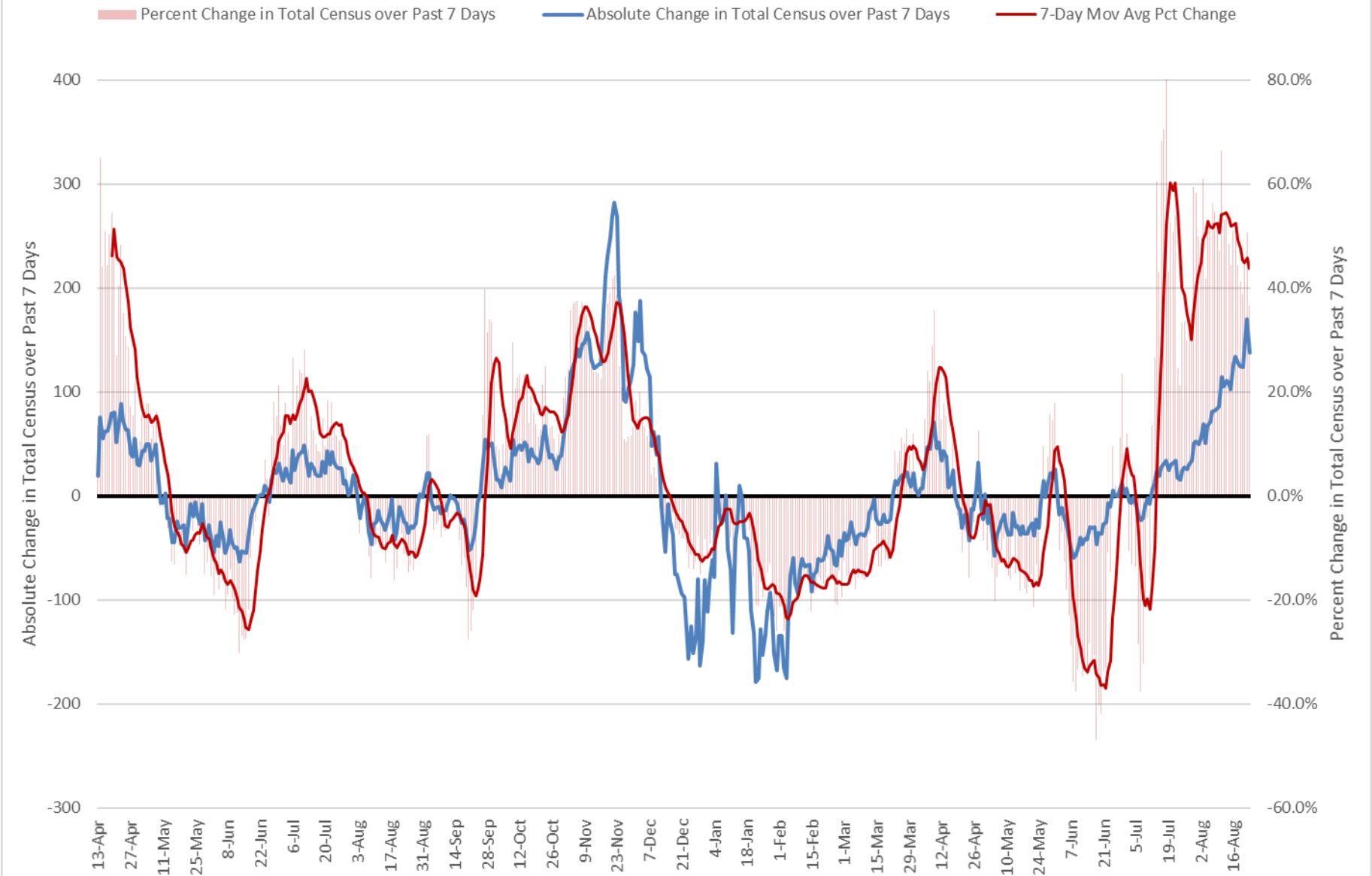


Zone 1 = Regions 1, 2, 5
 Zone 2 = Regions 4, 7, 8
 Zone 3 = Regions 3, 6

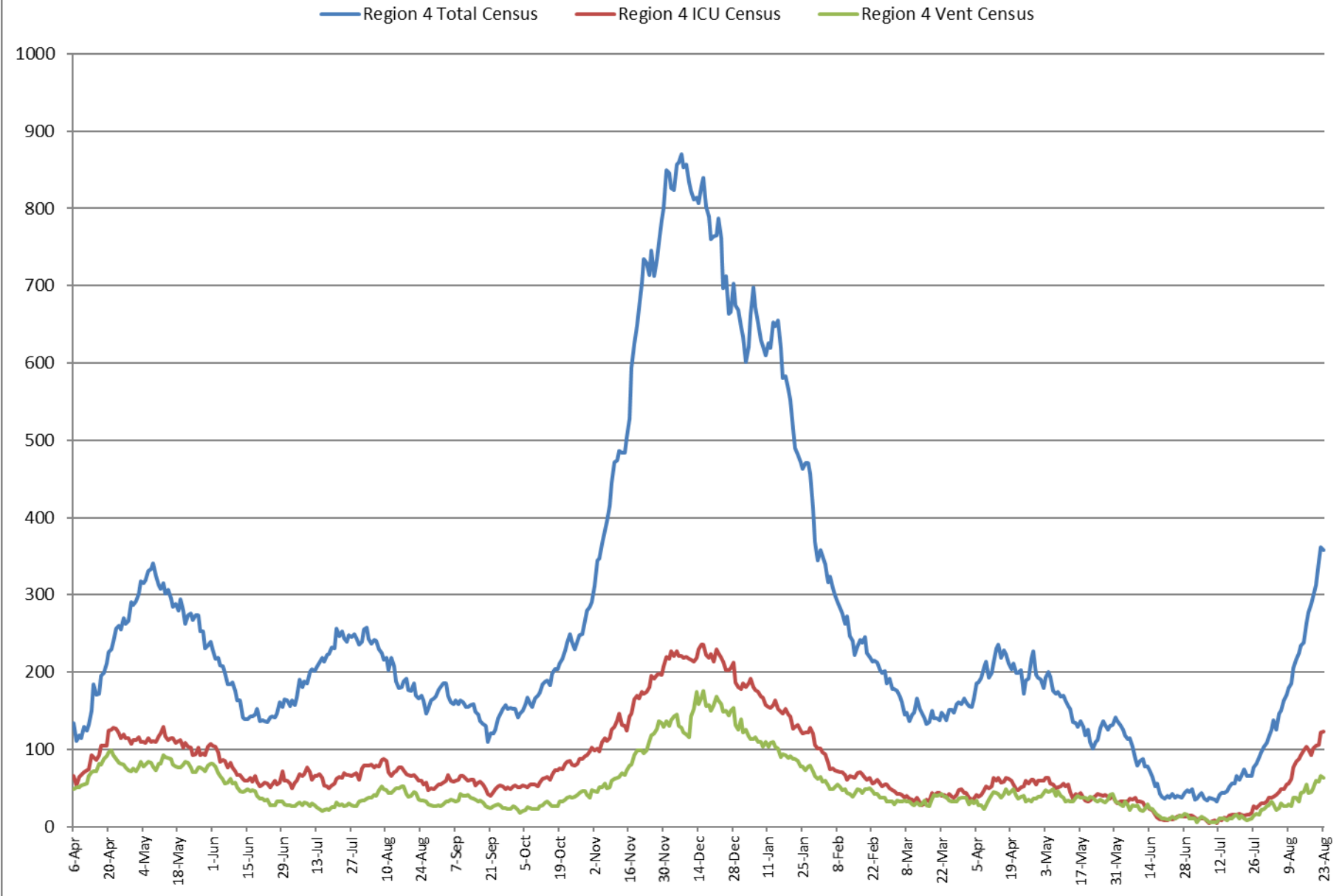
COVID Inpatient Census - All of Zone 2 (Regions 4/7/8)



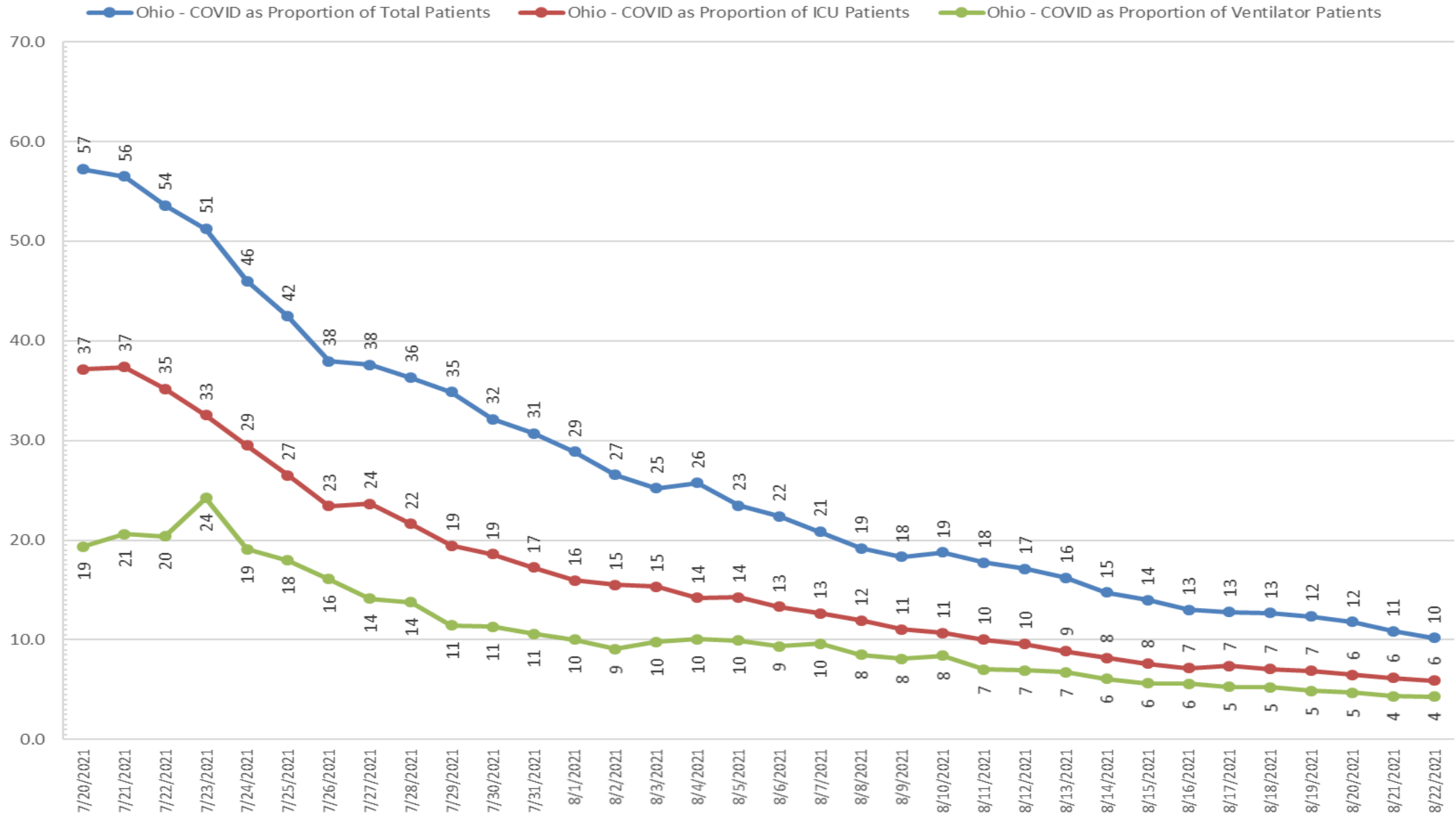
7-Day Change in Total COVID Census - All of Zone 2 (Regions 4/7/8)



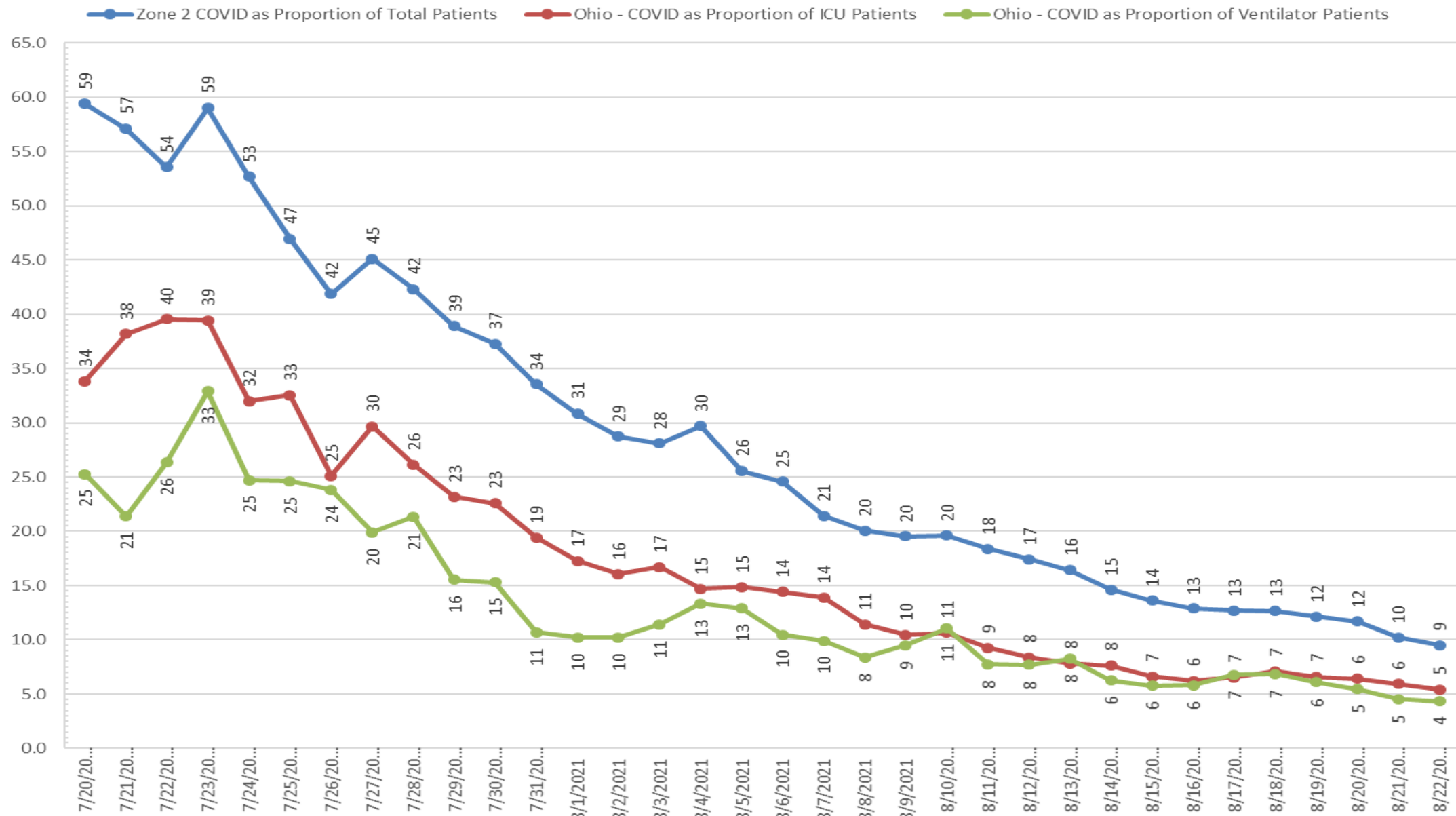
COVID Inpatient Census- Region 4 Only



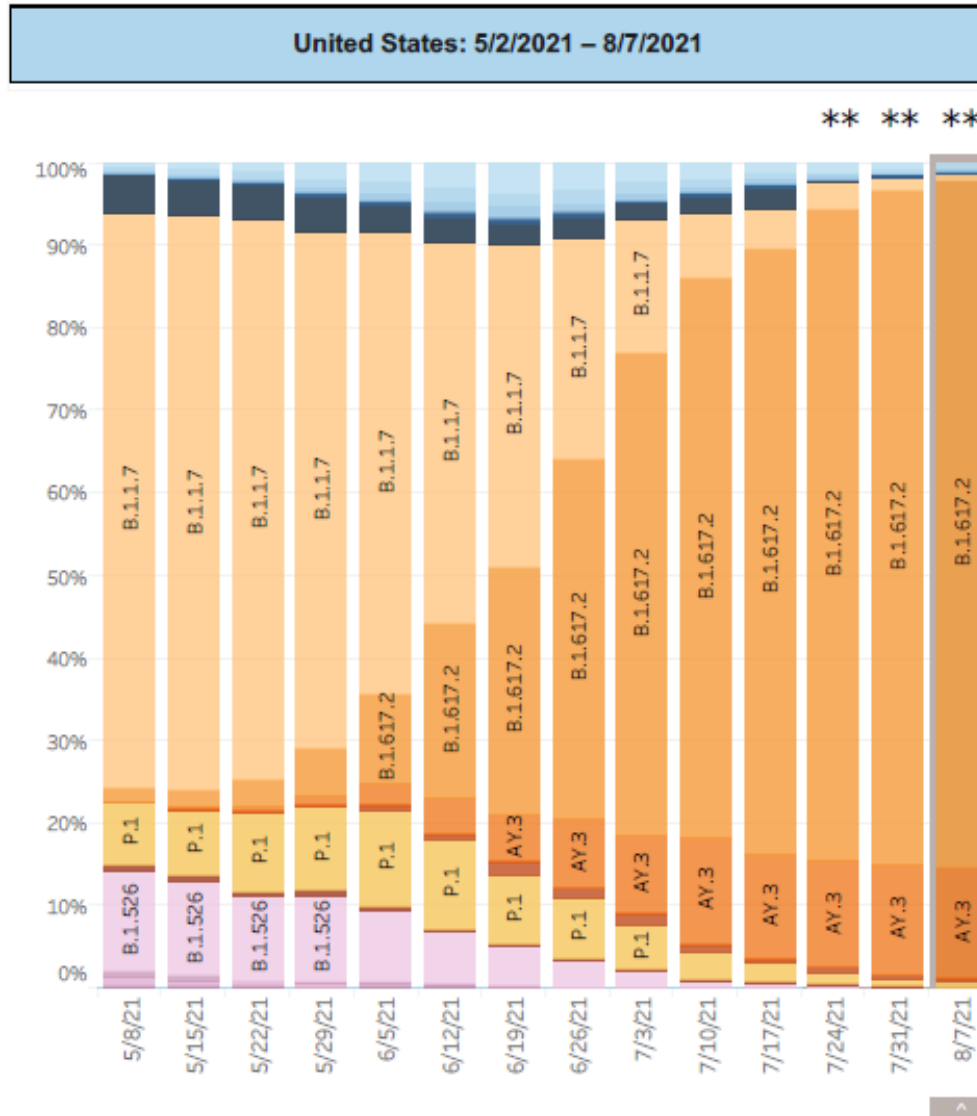
Ohio COVID Census - Proportion of Total Patients with COVID



Zone 2 COVID Census - Proportion of Total Patients with COVID



Delta Variant is Dominant



United States: 8/1/2021 – 8/7/2021 NOWCAST

| USA | | | | |
|-----------|-----------|------|--------|------------|
| WHO label | Lineage # | Type | %Total | 95%PI |
| Alpha | B.1.1.7 | VOC | 0.9% | 0.2-2.0% |
| Beta | B.1.351 | VOC | 0.0% | 0.0-0.2% |
| Gamma | P.1 | VOC | 0.5% | 0.0-1.2% |
| Delta | B.1.617.2 | VOC | 83.4% | 79.7-87.1% |
| | AY.3 | VOC | 13.4% | 10.2-16.9% |
| | AY.2 | VOC | 0.5% | 0.0-1.2% |
| | AY.1 | VOC | 0.1% | 0.0-0.2% |
| Eta | B.1.525 | VOI | 0.0% | 0.0-0.2% |
| Iota | B.1.526 | VOI | 0.1% | 0.0-0.5% |
| | B.1.621 | | 0.6% | 0.0-1.5% |
| | B.1.621.1 | | 0.2% | 0.0-0.7% |
| | B.1.628 | | 0.2% | 0.0-0.7% |
| | Other* | | 0.1% | 0.0-0.5% |
| | A.2.5 | | 0.0% | 0.0-0.2% |
| | B.1.626 | | 0.0% | 0.0-0.2% |
| | B.1.429 | VOI | 0.0% | 0.0-0.2% |
| | B.1.427 | VOI | 0.0% | 0.0-0.2% |

* Enumerated lineages are VOI/VOC or are circulating >1% in at least one HHS region during at least one two week period; remaining lineages are aggregated as "Other".

** These data include Nowcast estimates, which are modeled projections that may differ from weighted estimates generated at later dates

Sublineages of P.1 and B.1.351 (P.1.1, P.1.2, B.1.351.2, B.1.351.3) are aggregated with the parent lineage and included in parent lineage's proportion. AY.3.1 is aggregated with its parent lineage AY.3.



Statewide: Vaccine Status

By Total and % of Population

| Vaccine Started* | All Ages | 12+ | 18+ |
|------------------|-----------|-----------|-----------|
| % of Population | 51.22% | 59.87% | 62.15% |
| # Recipients | 5,987,684 | 5,987,565 | 5,662,802 |

Click County to Filter Metrics

Counties are colored by % of Population with Vaccine

Vaccine Started*, Change from
Last 24 Hours****

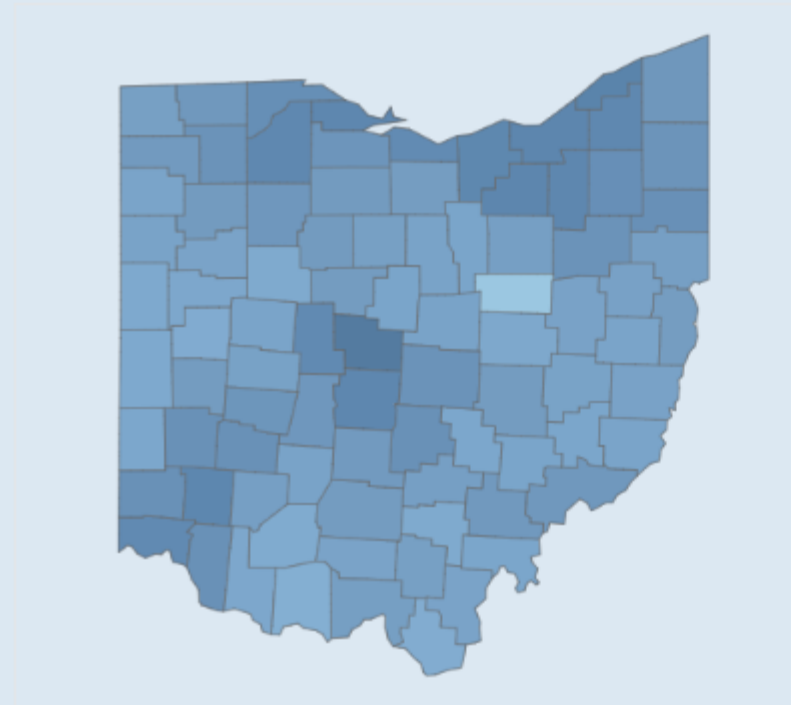
7,129

Vaccine Started* By
Population

51.22%

Vaccine Started*, Total

5,987,684



Residency Not Reported
8,808

Residents of Other States -
Vaccinated in Ohio
178,159

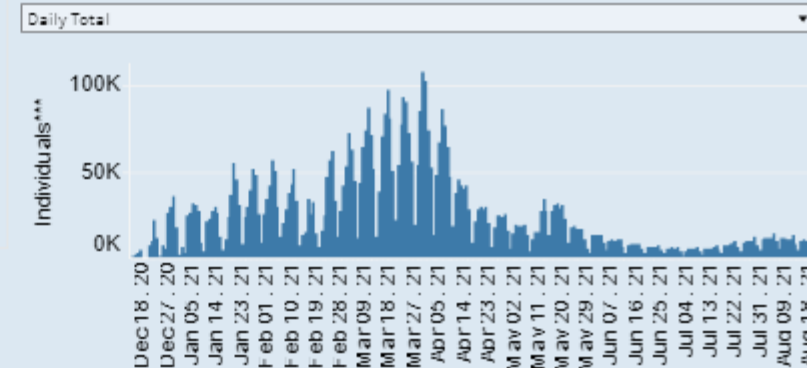
Key Metrics

Select to view key demographic groups

| Age Group | | |
|-----------|--------|-----------|
| 0-19 | 16.07% | 464,031 |
| 20-29 | 43.98% | 683,041 |
| 30-39 | 51.03% | 753,710 |
| 40-49 | 57.18% | 793,252 |
| 50-59 | 64.96% | 1,001,782 |
| 60-64 | 74.63% | 594,374 |
| 65-69 | 82.28% | 548,709 |
| 70-74 | 86.66% | 452,690 |
| 75-79 | 82.81% | 296,116 |
| 80+ | 80.08% | 399,979 |

View Count By

Select to view counts by daily or cumulative



State of Ohio | COVID-19 Hospitalizations and Deaths since Jan. 1, 2021 among Individuals not reported as Fully Vaccinated

Last Reported:
8/11/2021

COVID-19 Hospitalizations since 1/1/2021 among
Individuals not reported as Fully Vaccinated:

19,028 **98.1%**

COVID-19 Hospitalizations since 1/1/2021 among
Fully Vaccinated Individuals:

362 **1.9%**

COVID-19 Deaths since 1/1/2021 among
Individuals not reported as Fully Vaccinated:

6,910 **98.8%**

COVID-19 Deaths since 1/1/2021 among
Fully Vaccinated Individuals:

67 **0.9%**

Notes:

For surveillance purposes, COVID-19 vaccine breakthrough is defined as SARS-CoV-2 RNA or antigen detected on a respiratory specimen collected at least 14 days after a U.S. resident completes the primary series of an FDA-authorized COVID-19 vaccine, and for whom there is no known positive test for SARS-CoV-2 RNA or antigen detected on a respiratory specimen collected fewer than 45 days before the most recent positive test.

*Counts of hospitalizations and deaths are cumulative for the date range noted.

*Counts for hospitalizations and deaths are not mutually exclusive.

Mortality data is verified by coded death certificate information from the National Center for Health Statistics, and can take some time to receive. This information is not available daily, and is updated approximately twice per week as data is received.

Data Sources:

Ohio Disease Reporting System, CDC COVID Vaccine Breakthrough Project

Data to be updated weekly each Thursday

COVID-19 Vaccination

- All persons 12 years old and older are eligible for COVID-19 vaccination under current EUA (age 18 for Moderna and J&J vaccine)
- Full FDA-approval of Pfizer vaccine expected in next 2 weeks
- 3rd dose is approved for severely immunocompromised patients.
 - Solid-organ or bone marrow transplant at any time
 - Malignancy diagnosis in last 5 years or cancer treatment in last 5 years (CLL at any time)
 - Advanced or untreated HIV/AIDS
 - Primary immunodeficiency
 - Patients with IVIG, a biologic or other immunosuppressive medication (oral or infusion)
 - Patients receiving >20mg of prednisone per day for longer than 14 days
- Announcement on “booster” doses for others expected soon

What to do following exposure to COVID-19

| | Need for quarantine? | When to get tested | Masking Recommendations for indoor public settings at OSUWMC |
|-----------------------------|--|--|---|
| Fully Vaccinated* | Do NOT need to quarantine following exposure. | <ul style="list-style-type: none"> 3-5 days following exposure if asymptomatic Development of any <u>symptoms</u> consistent with COVID-19 | <ul style="list-style-type: none"> In areas of <u>high-substantial transmission</u> OR Following exposure to someone with COVID-19 x14 days or until test is negative |
| Not Fully Vaccinated | <ul style="list-style-type: none"> Must quarantine for 10 days for non-health care worker OR <ul style="list-style-type: none"> 7 day (with negative test result no earlier than the 5th day of quarantine) for health care worker if approved by EHS | | You should not leave your home while you are quarantined, but if you urgently need to leave you need to wear a mask at all times. |

*Vaccinated individuals at long term care facilities or inpatient settings need to quarantine after exposure to COVID-19.

Monoclonal antibody

- Research shows decreased risk of admission for high-risk patients from 10% down to 3%
- Indications:
 - Mild-moderate symptomatic outpatient COVID-19 within 7 days of symptom onset
 - Post exposure prophylaxis
 - Individuals who are at high risk of severe COVID-19 AND
 - Exposed to a person with COVID-19:
 - Unvaccinated or partially vaccinated OR
 - Fully vaccinated with severe immunosuppressive conditions/meds

High Risk of Severe Disease

- >65 years of age
- Over age 12 and 40kg
 - BMI >25
 - Pregnancy
 - CKD
 - Immunosuppression
 - Heart disease
 - HTN
 - Chronic lung disease
 - SCD
 - Neurodevelopmental disorders
- Dependent on trach, gastrostomy or chronic O2



COVID-19 Treatment Guidelines

- Refer to printed guidelines distributed in session

